



**US Army Corps  
of Engineers®**

# 2-Day Consultant Workshop

The Jacksonville District, U.S. Army Corps of Engineers (Corps) Palm Beach Gardens Permits Section will be hosting a 2-day public workshop on March 29 and 30, 2017 at the Jonathan Dickinson State Park. The purpose of the workshop is to provide information to consultants to improve and expedite the submittal of regulatory permit applications and conducting wetland delineations. We strongly encourage you to bring your own lunch, drinks, and snacks; no food or drinks will be provided.

## **Dates of Training:**

Day 1: March 29, 2017, 9:00am to 4:30pm, with a 1-hour lunch break

Day 2: March 30, 2017, 8:30am to 4:00pm, with a ½-hour lunch break

## **Topics to include:**

### Day 1: Classroom Training (Maximum registration of 60 people)

- Contents of a complete application
- Drafting a public notice
- Endangered species documentation
- Modification checklists
- Atlantic and Gulf Coastal Plain Data Form Version 2 wetland delineation
- Hydrologic indicators
- Hydrophytic vegetation tests
- Hydric soil indicators

### Day 2: Field Day (Maximum registration of 20 people)

- Wetland delineation methodology demonstration
- Small group sessions for practice.

**Location:** Jonathan Dickinson State Park, Kimbell Education Center,  
16450 SE Federal Highway, Hobe Sound, FL 33455

## **Registration for the Workshop is Required**

To register please contact Jerilyn Ashworth, in the Palm Beach Gardens Permits Section, 4400 PGA Boulevard, Suite 500, Palm Beach Gardens, FL 33410; or by electronic mail at [Jerilyn.Ashworth@usace.army.mil](mailto:Jerilyn.Ashworth@usace.army.mil). Please provide your name, company/agency/consulting firm name, dates you wish to attend, email address, contact phone number, and if attending Day 2, your level of wetland experience. Registration will continue until close of business on March 24, 2017. Please note if you are signed up for the field portion on Day 2, you must attend Day 1 for the classroom training. Attendance will be limited to one person per consulting firm/ agency. If additional persons from a company wish to attend, there will be a wait list in order of registration, allowing two people per company until registration is full.

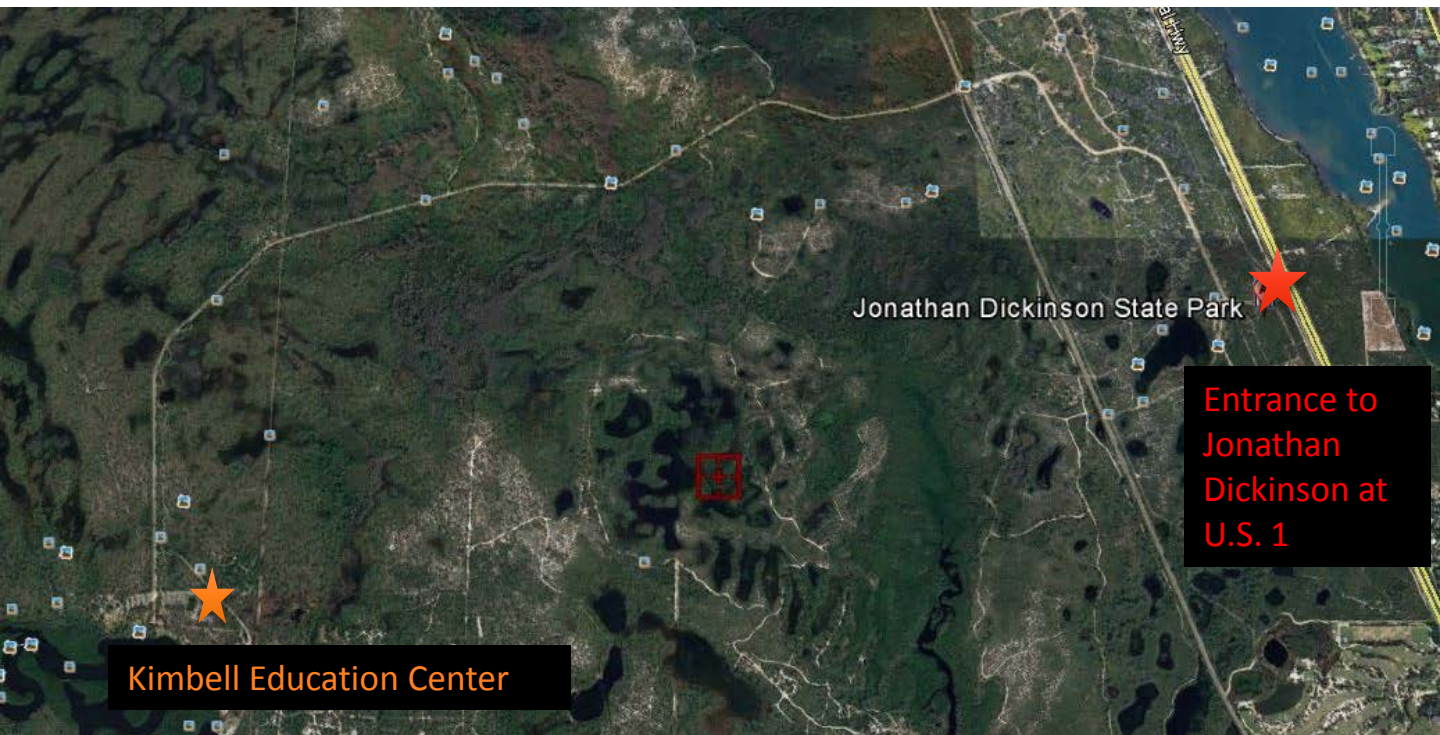


**US Army Corps  
of Engineers®**

# 2-Day Consultant Workshop

## Training Location Information:

Jonathan Dickinson State Park, Kimbell Education Center  
16450 SE Federal Highway, Hobe Sound, FL 33455



## Directions to the site are as follow:

Directions from the South: Take Interstate 95 (I-95) to exit 87 A for Indiantown Road East (FL-706E). Travel approximately 3.2 miles and turn left (north) onto Alternate A1A (FL-811). Continue for about 1.5 miles and turn left (north) onto U.S. Highway 1. Continue for 5 miles and turn left into Jonathan Dickinson State Park.

Directions from the North: Take I-95 South to SE Bridge Road, exit 96. Turn left onto SE Bridge Road and continue for about 6.5 miles. Turn right onto U.S. Highway 1 (south). Travel approximately 4.6 miles and turn right into Jonathan Dickinson State Park.

Once in the Park: Stop at the guard house and provide your name. Tell the Park Ranger that you are attending the U.S Army Corps Training and the park fee should be waived. Continue straight past the guard house, and make a right. Follow the road until the end, and make a left and the education center will be on your right. It takes approximately 15 minutes to drive from the entrance to the education center.